

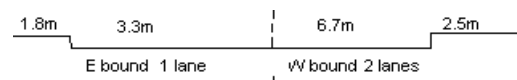
YEAR 2015

CORE STATION 1107

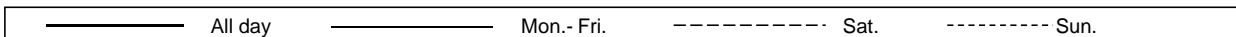
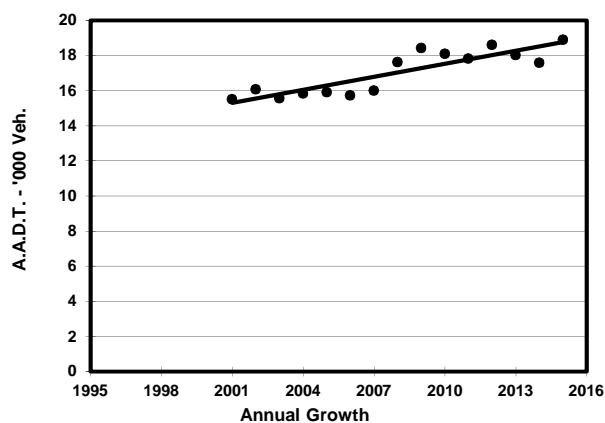
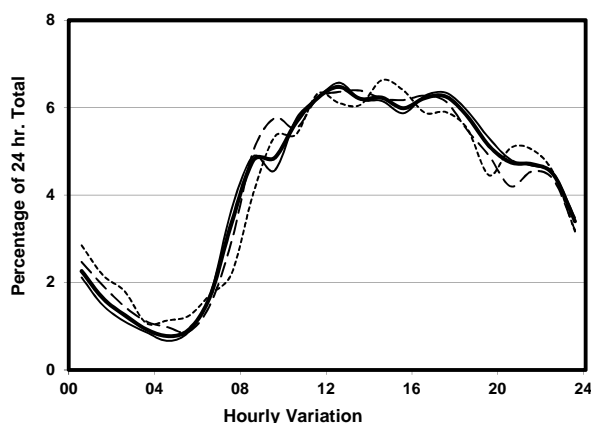
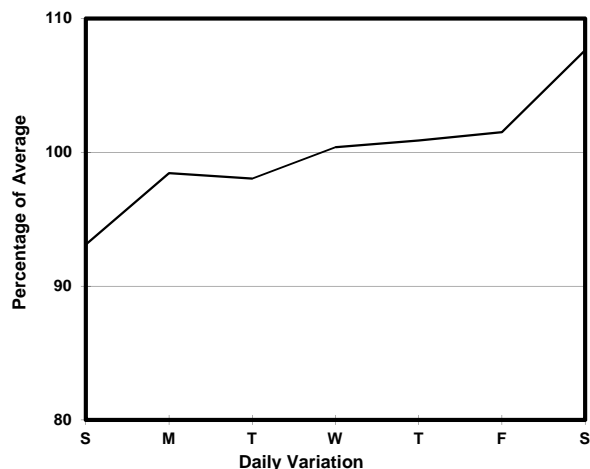
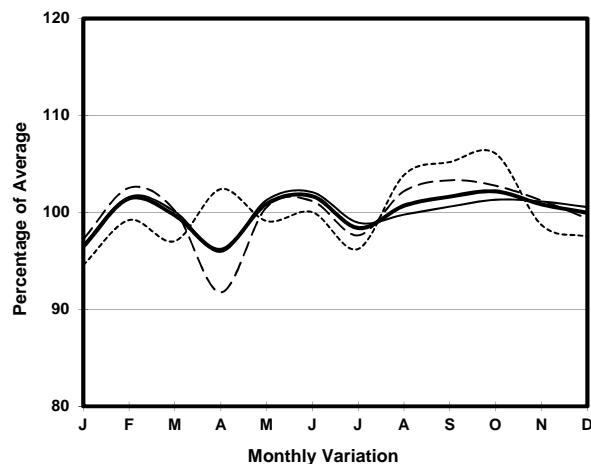
ROAD NETWORK MINOR

ROAD TYPE LOCAL DISTRIBUTOR

LINK TUNG LO WAN RD (from CAUSEWAY RD to MORETON TERRACE)



1. TRAFFIC FLOW VARIATION AND GROWTH



2. TRAFFIC CHARACTERISTICS (BY DIRECTION)

Parameter	All - Day	Mon. - Fri.	Sat.	Sun.
EAST BOUND				
A.A.D.T.	3290	3200	3670	3400
R 12 / 24 - %	70	70.5	68.1	70.2
R 16 / 24 - %	89.8	90.4	87.6	88.9
AM Peak Hour	0900-1000	0900-1000	0900-1000	0900-1000
One-way flow at AM peak hour	190	180	250	200
T - % (AM)	-	3.2	-	-
PM Peak Hour	1600-1700	1600-1700	1600-1700	1800-1900
One-way flow at PM peak hour	200	200	210	220
T - % (PM)	-	2.5	-	-
Prop.of commercial vehicles - 16 hr.	-	0.9	-	-
WEST BOUND				
A.A.D.T.	15600	15730	16770	14270
R 12 / 24 - %	67.7	68	68.6	64.7
R 16 / 24 - %	86.6	87.1	86.2	83.9
AM Peak Hour	0800-0900	0800-0900	0900-1000	0900-1000
One-way flow at AM peak hour	740	760	930	750
T - % (AM)	-	11.9	-	-
PM Peak Hour	1700-1800	1700-1800	1700-1800	1700-1800
One-way flow at PM peak hour	1010	1030	1080	870
T - % (PM)	-	7.8	-	-
Prop.of commercial vehicles - 16 hr.	-	8.2	-	-

3. OTHER INFORMATION AND COMMENT

4. Vehicle classification and occupancy - Monday to Friday

Time		Class of vehicle									
		Motor	Private	Taxi	Private	PLB	Goods veh.		Non	Fr. Bus	
		Cycle	Car		LB		Light	M & H	Fr. Bus	SD	DD
0700-0800	Pro	1.6	26.8	33.3	8.1	0.0	8.9	3.3	13.8	0.2	3.9
	Ocp	1.0	1.6	1.7	15.2	0.0	1.6	1.5	45.1	49.0	20.1
0800-0900	Pro	2.8	64.6	15.9	1.4	0.0	6.1	0.9	5.2	0.2	2.8
	Ocp	1.2	1.5	1.8	9.0	0.0	1.7	1.0	16.6	19.5	24.5
0900-1000	Pro	1.6	60.5	11.4	0.0	0.0	18.0	1.6	3.3	0.3	3.3
	Ocp	1.3	1.5	1.8	0.0	0.0	1.7	1.7	10.7	13.5	13.8
1000-1100	Pro	2.1	47.2	26.3	0.5	0.0	16.1	3.8	1.1	0.1	2.7
	Ocp	1.0	1.4	1.6	2.0	0.0	1.5	2.0	4.0	24.0	12.7
1100-1200	Pro	4.4	49.2	27.4	1.2	0.0	11.2	1.9	1.9	0.2	2.6
	Ocp	1.0	1.4	1.6	2.0	0.0	1.9	2.3	4.0	12.0	14.2
1200-1300 Peak hour	Pro	1.4	50.4	28.0	0.5	0.5	13.1	1.9	2.3	0.1	1.9
	Ocp	1.0	1.6	1.8	8.0	1.0	1.8	1.3	11.4	8.0	15.9
1300-1400	Pro	2.9	56.0	25.4	0.0	0.0	10.5	0.5	2.4	0.1	2.2
	Ocp	1.0	1.3	1.7	0.0	0.0	1.7	1.0	6.2	17.0	14.2
1400-1500	Pro	2.7	53.4	23.7	0.5	0.0	14.2	1.4	2.3	0.0	1.8
	Ocp	1.2	1.8	1.8	1.0	0.0	1.7	2.3	3.8	0.0	13.3
1500-1600	Pro	3.6	51.4	22.8	2.1	0.0	14.0	0.5	3.1	0.3	2.2
	Ocp	1.3	1.4	1.7	9.8	0.0	1.8	1.0	4.3	13.5	14.6
1600-1700	Pro	3.1	41.6	32.9	3.6	0.0	11.3	0.5	4.6	0.1	2.3
	Ocp	1.0	1.6	1.5	3.6	0.0	1.8	1.0	3.7	1.0	12.8
1700-1800	Pro	3.2	49.0	28.2	1.6	0.0	11.2	0.0	4.3	0.1	2.4
	Ocp	1.2	1.6	1.5	7.3	0.0	1.6	0.0	3.4	24.0	13.4
1800-1900	Pro	2.9	58.7	25.8	0.6	0.0	3.5	0.0	5.3	0.4	2.8
	Ocp	1.0	1.6	2.2	3.0	0.0	1.2	0.0	10.9	13.0	16.7
1900-2000	Pro	2.8	60.7	30.8	0.0	0.0	1.8	0.5	1.4	0.1	2.0
	Ocp	1.0	1.5	1.9	0.0	0.0	1.8	3.0	4.7	45.0	11.1
2000-2100	Pro	2.1	42.0	49.4	0.0	0.5	2.7	0.5	0.5	0.3	2.0
	Ocp	1.0	1.6	1.5	0.0	1.0	1.6	1.0	4.0	14.0	8.4
2100-2200	Pro	1.1	43.1	51.5	0.0	0.0	1.7	0.0	0.6	0.1	2.0
	Ocp	1.5	1.7	1.6	0.0	0.0	1.3	0.0	5.0	21.0	6.6
2200-2300	Pro	3.0	37.1	53.2	0.0	0.0	2.4	0.6	1.2	0.2	2.4
	Ocp	1.0	1.5	1.6	0.0	0.0	1.3	3.0	1.0	12.0	6.8
16 hours	Pro	2.6	50.3	29.9	1.1	0.1	9.2	1.1	3.1	0.2	2.4
	Ocp	1.1	1.5	1.7	8.6	1.0	1.7	1.8	14.5	17.8	14.1

Legend

Pro. Proportion of vehicles in % (Sum may not add up to 100% due to figure rounding)*

Ocp. Average occupancy of vehicles including both driver and passengers*

M&H Medium and Heavy

* All traffic data are collected from combined bounds except for one way traffic